

HEMISPHERE

General: Blending design and creativity in porcelain-produced with metal sheeting aesthetic. Available in 4 architectural colourways and 3 sizes, including mosaics to match.

Applications: Suitable for all residential and commercial spaces, including modern living areas, retail fit outs, hospitality projects, and office buildings.

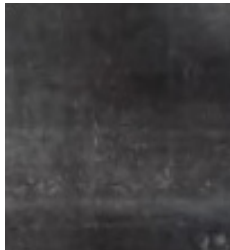
Platinum



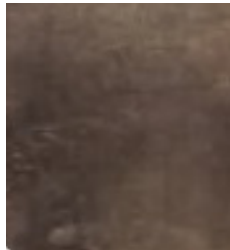
Steel



Iron



Copper



Origin: Italy

Colours: Platinum | Steel | Iron | Copper

Sizes: 900 x 900 x 10mm
600 x 600 x 10mm
600 x 300 x 9mm

50 x 50mm Mosaics (300 x 300mm sheets)

Finish: Standard & Lappato

Type: Full colour body with rectified edges

Appearance: Metal Sheetting

Production: Pressed porcelain using ink jet technology

Technical: Water Absorption less than 0.5%
Frost Resistance - Frost Proof
Stain Resistant
Scratch Resistant - MOHS 5
Chemical Resistant
Fire Retardant

Slip Resistance: Standard Finish R10 - P1 /I

HEMISPHERE



ROCKS ON
HARD SURFACE SOLUTIONS

Phone: (61) 2 8303 0100

Email: reception@rockson.com.au